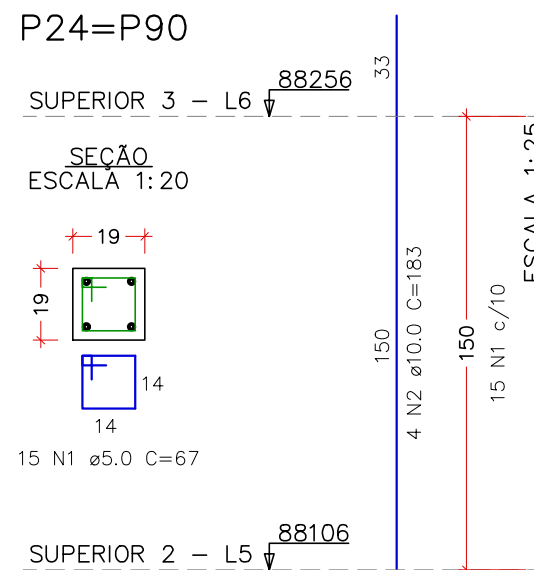
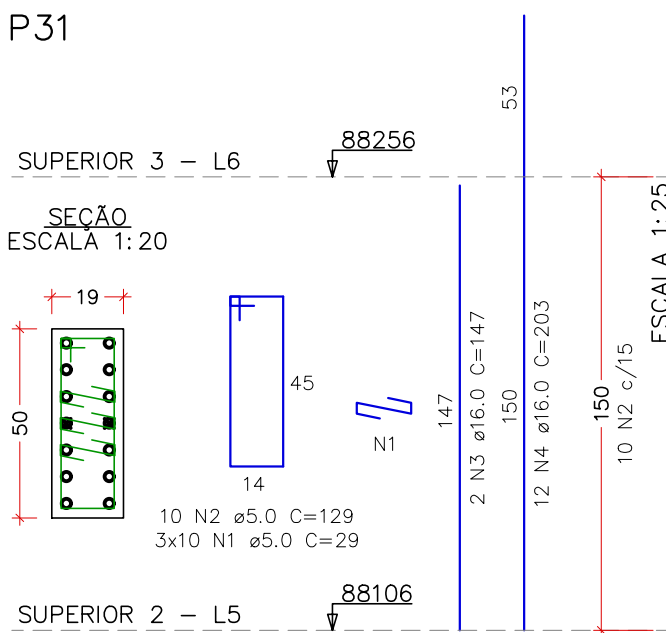


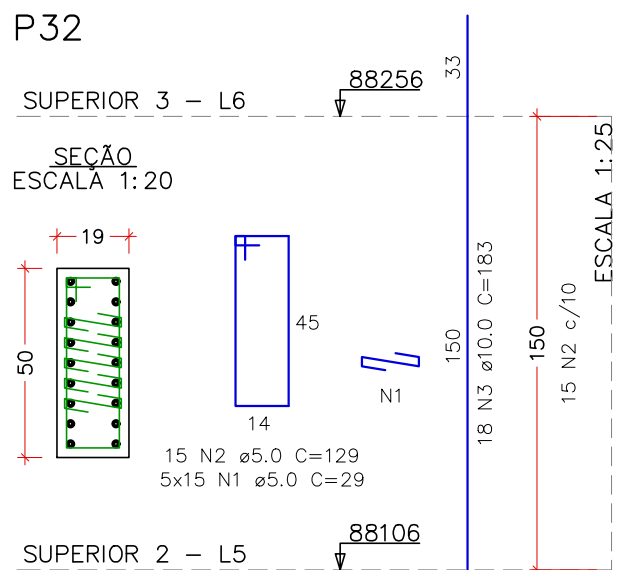
P24=P90



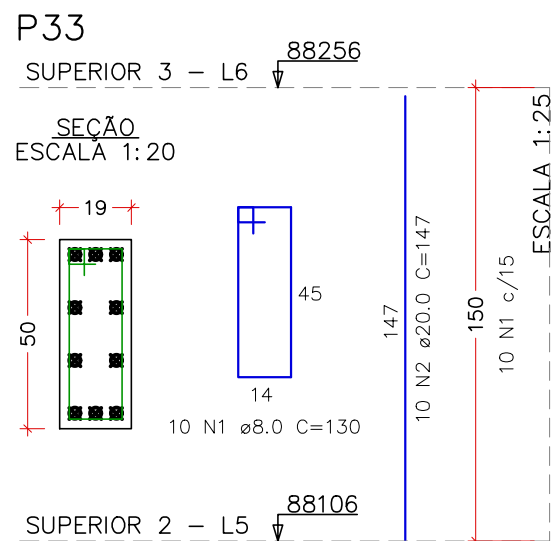
P31



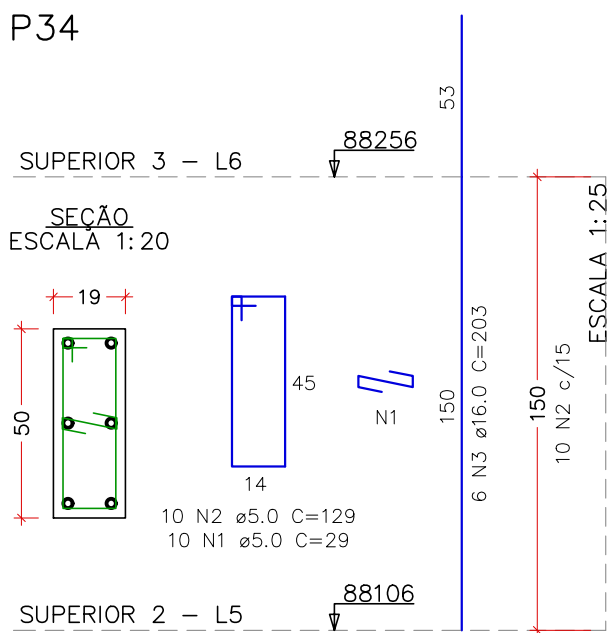
P32



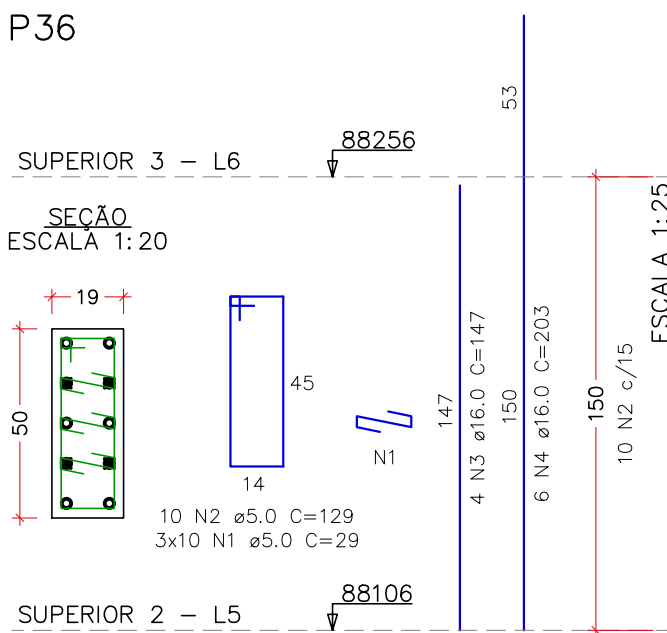
P33



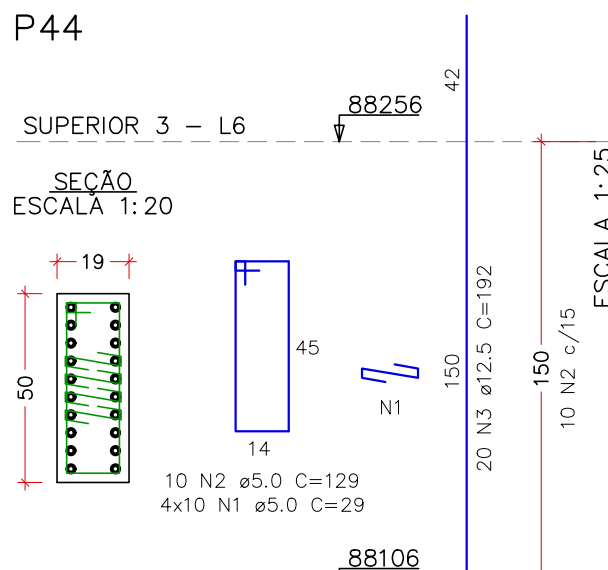
P34



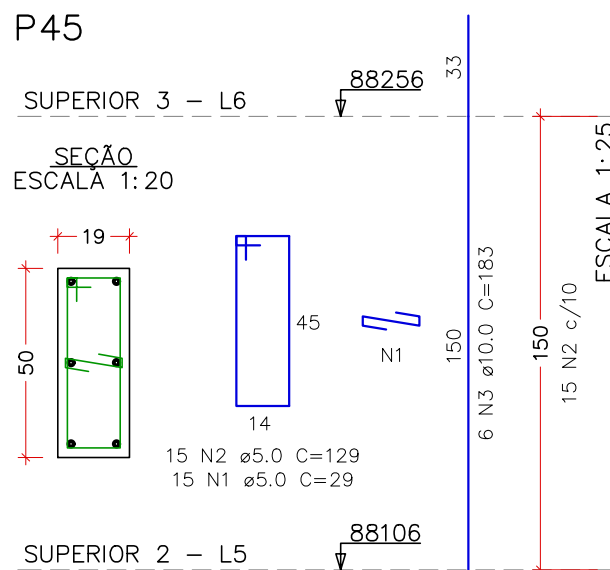
P36



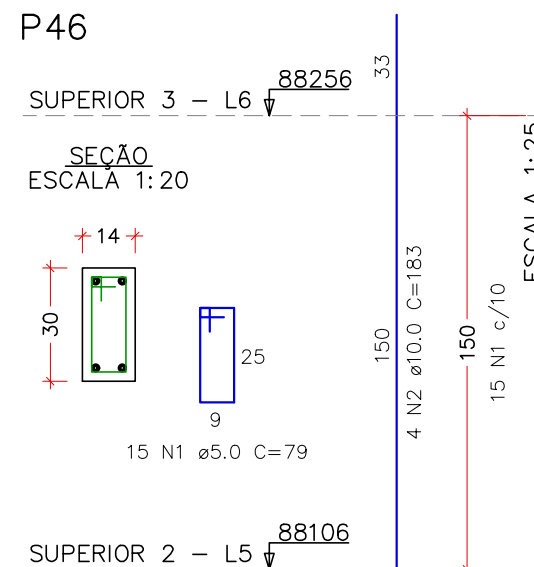
P44



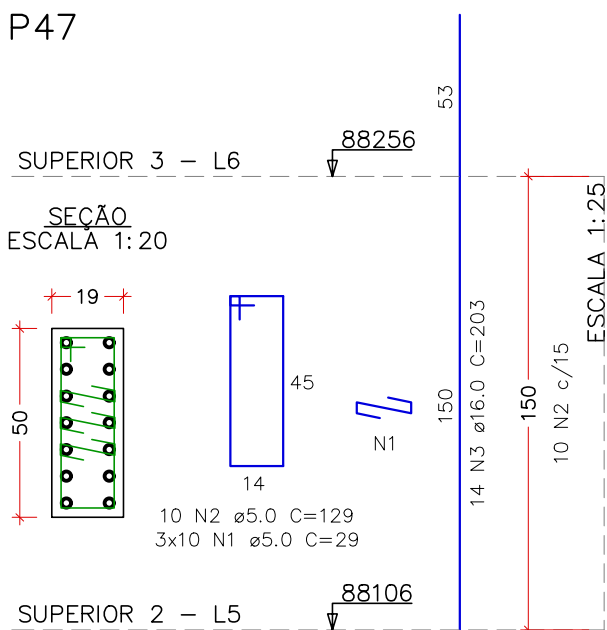
P45



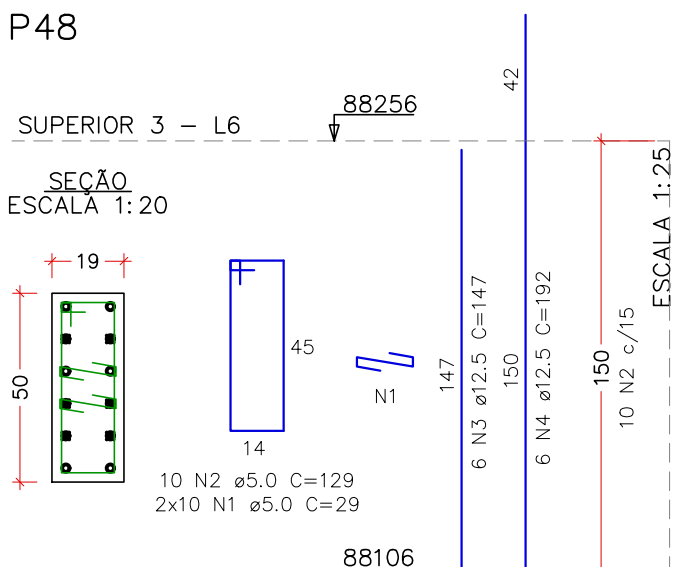
P46



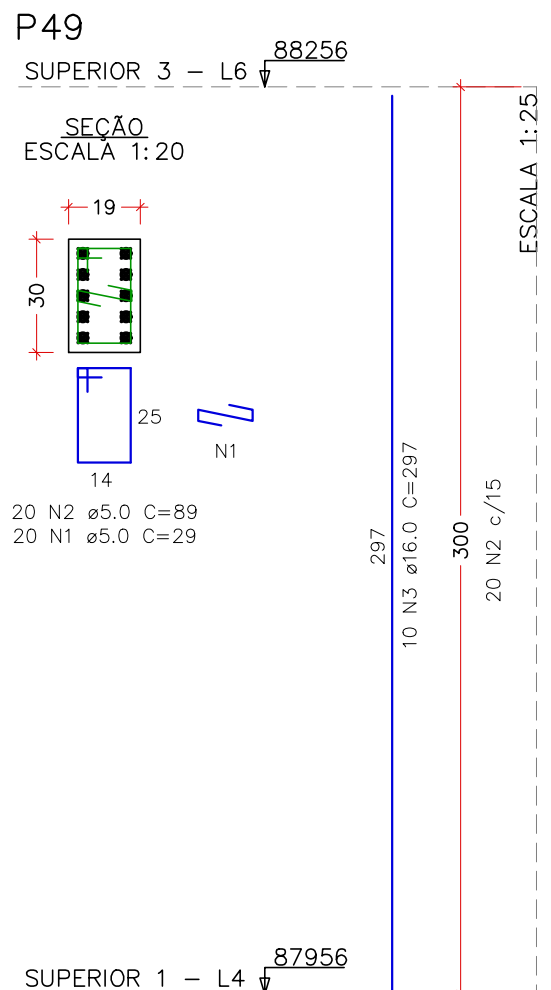
P47



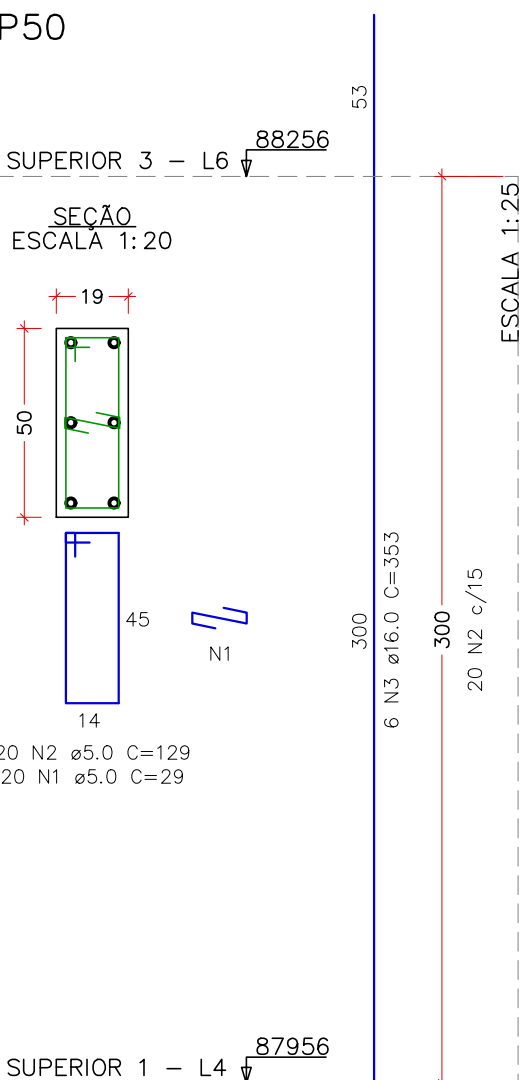
P48



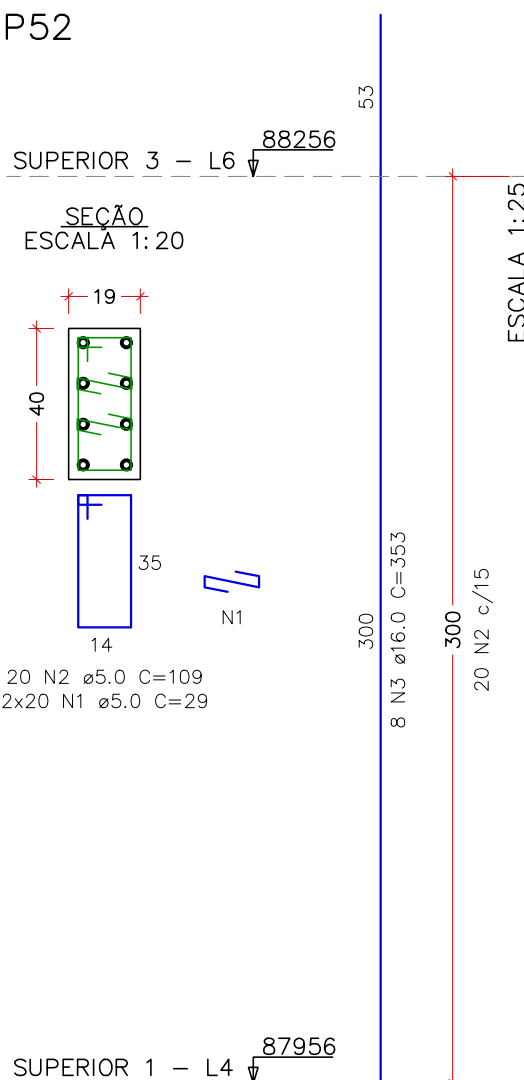
P49



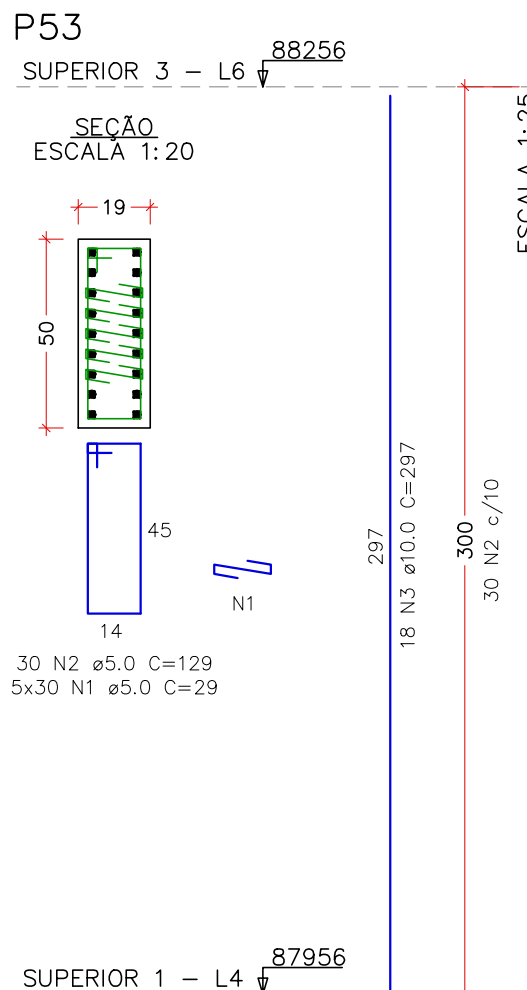
P50



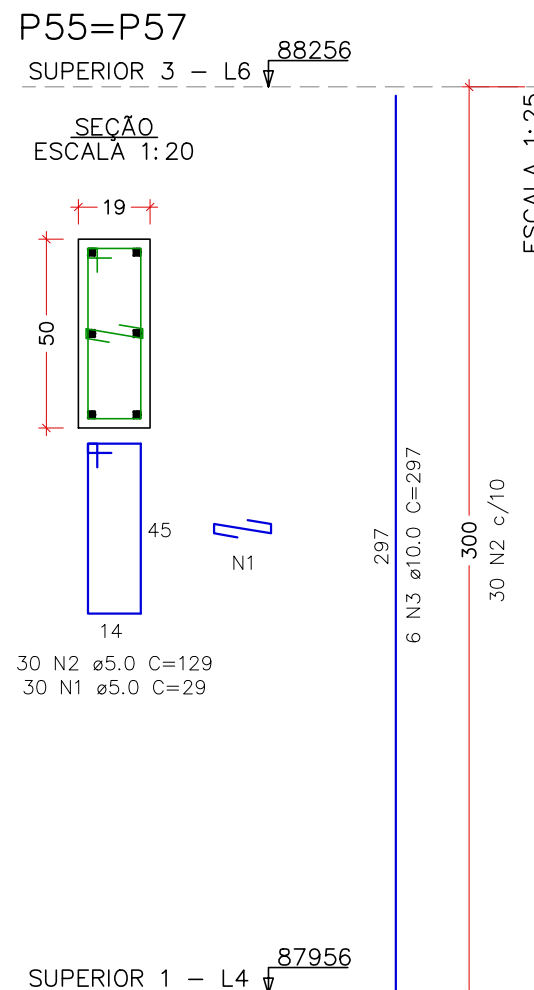
P52



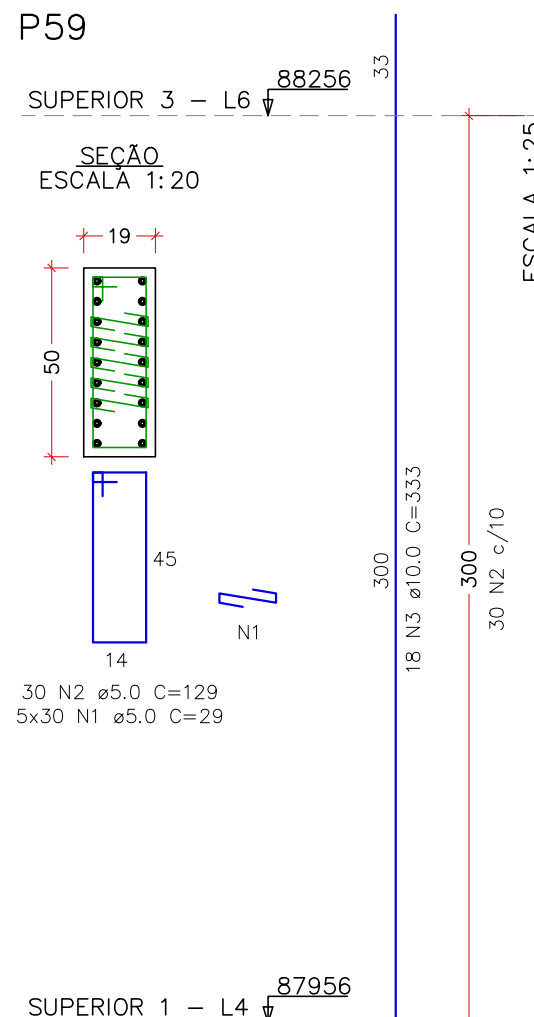
P53



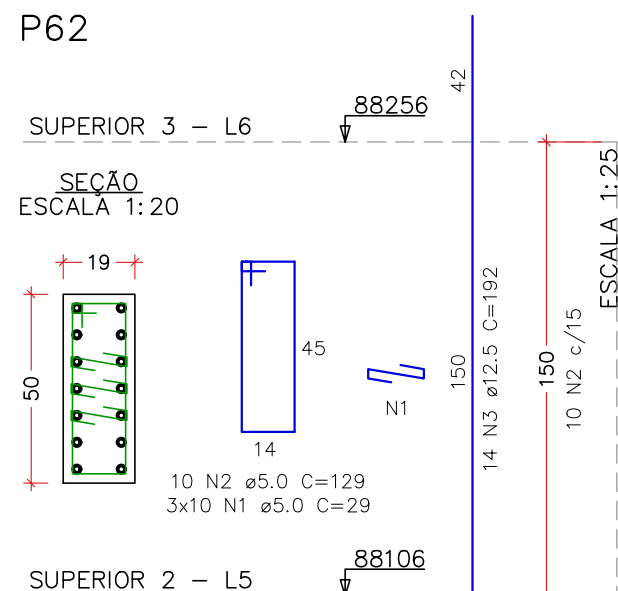
P55=P57



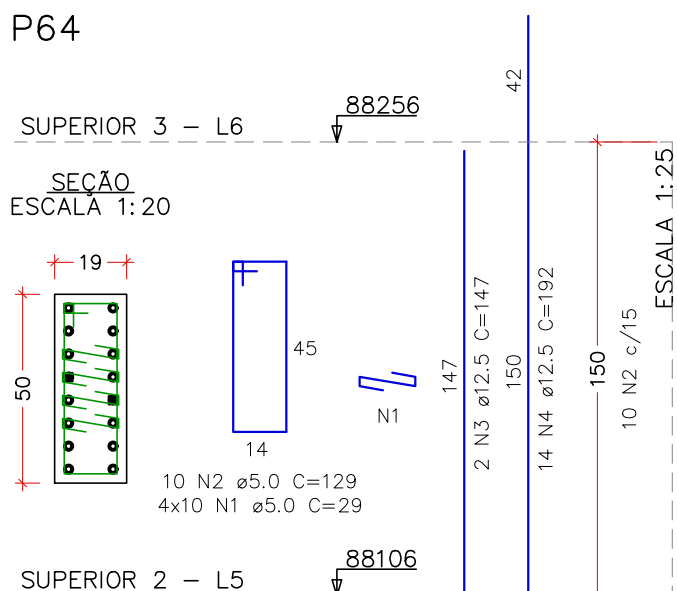
P59



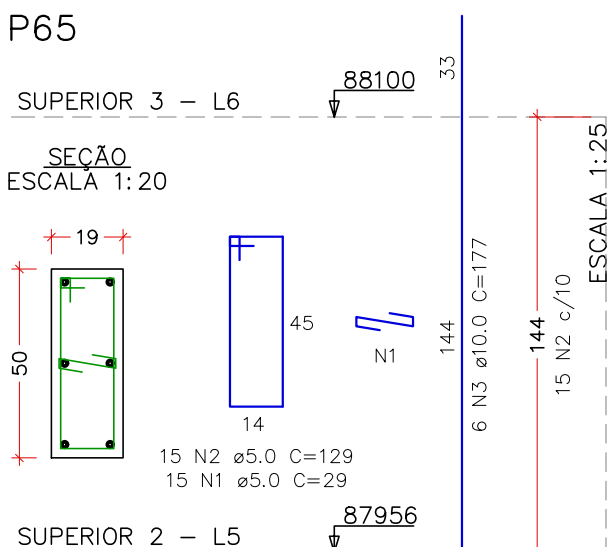
P62



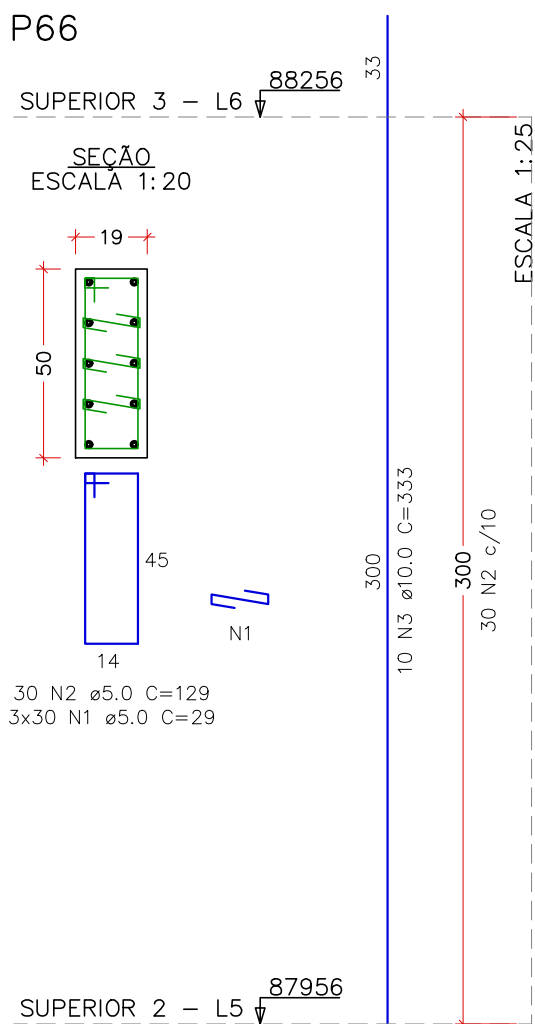
P64



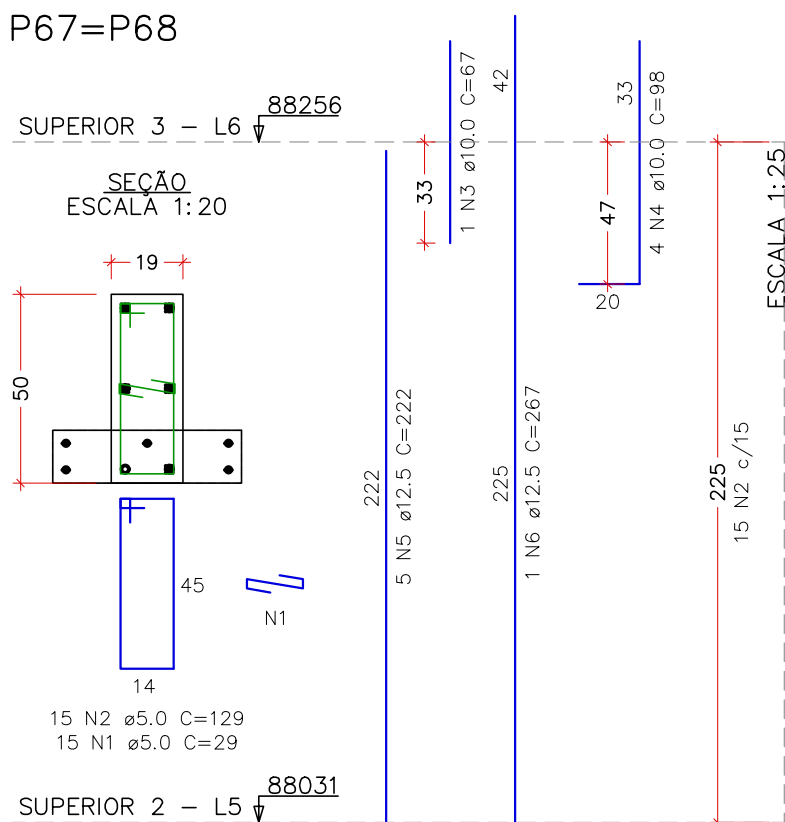
P65



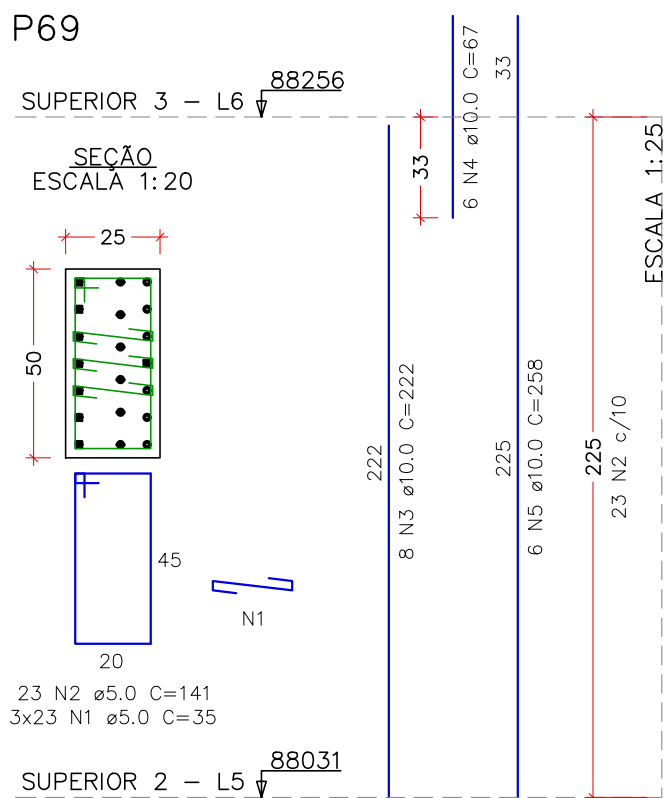
P66



P67=P68



P69



RELAÇÃO DO AÇO – PAV. SUPERIOR 3

ELEMENTO	AÇO	N	DIAM (mm)	QUANT	C.UNIT (cm)	C.TOTAL (cm)
2xP24	CA60	1	5.0	30	67	2010
P31	CA50	2	10.0	3	183	549
P32	CA60	1	5.0	30	67	2010
P33	CA50	2	10.0	3	183	549
P34	CA60	1	5.0	30	67	2010
P36	CA50	2	10.0	3	183	549
P44	CA60	1	5.0	30	67	2010
P45	CA50	2	10.0	3	183	549
P46	CA60	1	5.0	30	67	2010
P47	CA50	2	10.0	3	183	549
P48	CA60	1	5.0	30	67	2010
P49	CA50	2	10.0	3	183	549
P50	CA60	1	5.0	30	67	2010
P52	CA50	2	10.0	3	183	549
P53	CA60	1	5.0	30	67	2010
P55=P57	CA50	2	10.0	3	183	549
P59	CA60	1	5.0	30	67	2010
P62	CA50	2	10.0	3	183	549
P64	CA60	1	5.0	30	67	2010
P65	CA50	2	10.0	3	183	549
P66	CA60	1	5.0	30	67	2010
2xP67	CA50	2	10.0	3	183	549
P69	CA60	1	5.0	30	67	2010

RESUMO DO AÇO

AÇO	DIAM (mm)	C.TOTAL (m)	PESO ± 10% (kg)
CA50	8.0	13	5.6
CA50	10.0	303	207
CA50	12.5	143	151.5
CA50	15.0	165.1	286.6
CA50	20.0	14.7	39.9
CA60	5.0	806.9	136.8
PESO TOTAL (kg)			
CA50	690.7		
CA60	136.8		

VOLUME DE CONCRETO (C=30) = 4.69 m³
ÁREA DE FORMA = 69.26 m²

REV. 03	31/03/25	REVISÃO DE PROJETO CONFORME ANÁLISE SOLICITADA	DAC
REV. 02	24/02/25	REVISÃO DE PROJETO CONFORME ANÁLISE SOLICITADA	DAC
REV. 01	30/10/24	REVISÃO DE PROJETO COMPLETO	DAC
REV. 00	02/02/24	EMIÇÃO INICIAL	DAC
REVISÃO DATA :	DESCRIÇÃO:	RESP.:	
CLIENTE			
			
PROJETO	COORDENAÇÃO		
 Rua Cel. Joaquim Francisco, 341, Bairro Varginha CEP-37501-052 - Itajubá / MG Tel: (35) 2143 - 9087 www.dacengenharia.com.br		ALOISIO CAETANO FERREIRA CREA: MG-97.132/D RESPONSÁVEL TÉCNICO E AUTOR RAFAEL BARBOSA CARREIRA CAU: 00A155411-5	
EMPENHAMENTO			
CONSTRUÇÃO DA ESCOLA MUNICIPAL ALEGRINHO			
ENDEREÇO	DISCIPLINA		
RUA LOURDES DE SOUZA SANTOS, COLINA VERDE POUSO ALEGRE – MINAS GERAIS	ESTRUTURAL		
ASSUNTO	FASE DO PROJETO		
PROJETO ESTRUTURAL EM CONCRETO ARMADO DETALHAMENTOS PILARES DO PAV. SUPERIOR 3	EXECUTIVO		
DATA INICIAL	ESCALA	REVISÃO	ARQUIVO
02/02/2024	INDICADA	RO3	DAC-PMPA-ALEG-PE-EST-RO3.DWG